

# Kindergarten Readiness CAN

Seventh Meeting

May 12, 2017



# Welcome/ Overview



## **Vision**

*Every Generation Achieves Success – Cradle to Career*

## **Mission**

*To Align our Community Resources so  
Everyone is Empowered to Achieve Success*

# West Florida Public Library

Shannon Bovis

- Responsibilities/Goals of Organization: Lifelong Learning, Community Gathering Space
- Service Area: Escambia County, Florida
- Size of Organization: 95 employees (3 are children's librarian with MLIS degree), budget \$5.4 million
  - circulation rate: 750,000 items last FY
  - active card holders: 142,232
  - # of library visits last FY: 620,000
  - # of items in the collection: 444,064
- Years in Operation- since 1937 (80 years)
- Funding sources: Escambia County, Federal grants LSTA funds and State Aid via the State library, Friends of the Library donations and various other grants
- Key Contacts: Library Director- Todd Humble, [tjhumble@mywfpl.com](mailto:tjhumble@mywfpl.com), 850-530-0116  
Library Manager- Kristine Crane [kecrane@mywfpl.com](mailto:kecrane@mywfpl.com), 850-436-5036  
Youth Services Coordinator- Shannon Bovis, [smbovis@mywfpl.com](mailto:smbovis@mywfpl.com), 850-436-5061

- Overall organizational outcomes: Strategic Goals for 2013-2018 focused on Lifelong learning, **Early Literacy**, Reading, viewing and listening for pleasure, Information Fluency, Civic Engagement, Genealogy and Local History.
- Tied to which contributing indicators: High quality parent/caregiver interaction with child, and high quality early education program
- Have any parent education/engagement components? Storytimes provide an opportunity for improving the parent/child bond around early literacy activities.
- Greatest Challenge: Budget limitations
- Greatest Opportunity: Community Partnerships!
- Bright Spot: Firetruck ride!

# Storytimes!



- The primary goal of storytime is to create a love of books and reading
- Target Audience/ Participants- All infants, toddlers, pre-schoolers and their parents/caregivers, no waiting list, free, open to all. Regular storytimes at 5 of our 7 branches, since June of last year we have had 258 storytimes, with an attendance of 7,890.
- Key Partners- Ebonwood Community Center
- Contributing indicators- High quality parent/caregiver interaction; enrolled in high quality early education program
- Program outcomes-Families start a reading habit and become lifelong library users

# Summer Reading!



- Goals of program- Bridge the Reading Gap/Summer Slide and keep children reading during the summer
- Target Audience- Babies through Adults
- Key Partners- Friends of the Library, various community sponsors
- Contributing Indicators-High quality parent/caregiver interaction with child, Enrolled in high quality early education program.
- Program outcomes- last summer 2,326 signed up for summer reading, 769 read 12.5 hours, 120 read 50 hours or more. We held 119 individual programs attended by 6,354

# Tumblebooks and ABC Mouse



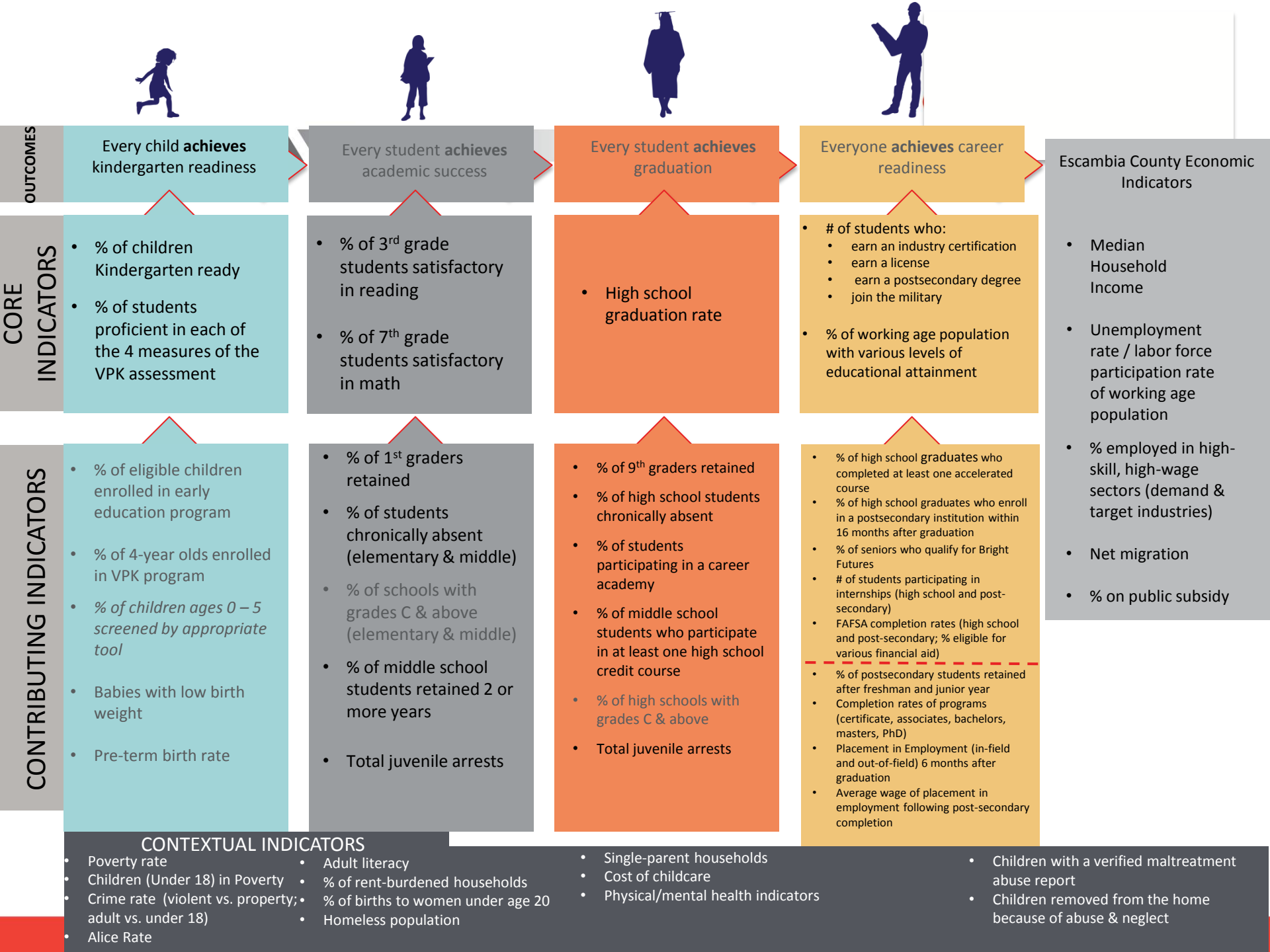
- Goals of Program- Tumblebooks helps kids with their reading practice, and is also great high quality entertainment. ABC Mouse is a self-paced digital education program for ages 2-8.
- Target Audience/ Participants – children aged 2 and up
- Years in existence- We launched Tumblebooks in June 2016, and ABC Mouse (in libraries only) in September 2016
- Contributing indicators-High quality early education program
- Program Outcomes-Over 4,468 books have been read in Tumblebooks in the last 11 months, and ABC Mouse has logged 152 books read, over 1,400 activities completed in over 271 sessions.



# Trauma Informed Community Discussion

# Presentation of K Readiness Metrics & Plans for How to Present in Baseline Report

Jennifer Grove



# CORE INDICATORS

# Core Indicator 1:

## % of Children Kindergarten Ready

- In Baseline Report will explain how we've not had valid data since 2013-14 when the rate was 66.2% (compared to state average of 71% at that time)
- Will also highlight that a new Kindergarten Readiness Assessment will be implemented Fall of 2017 which will give us more valid data on this metric

# Core Indicator 2:

## % of Students Proficient in each of the 4 Measures of the VPK Assessment – 2015/16 Data

	Print Knowledge	Phonological	Oral Language	Math
ECSD	86%	83%	81%	84%
ELC	86.3%	89%	93%	88.5%
Total	86.2%	87.4%	89.9%	87.3%

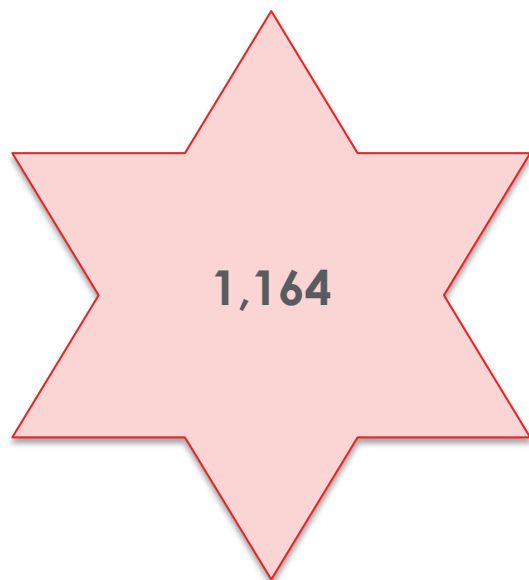
NOTES: Will include 2016/17 data in Baseline Report. Will look at including gains by numbers or narrative from AP1 to AP3 in Baseline Report as well – will definitely include numbers on Online Dashboard. Waiting to hear from Dr. Colo on whether to report like this or in total for VPK.

# CONTRIBUTING INDICATORS

# Eligible Children Enrolled in a School Readiness Program

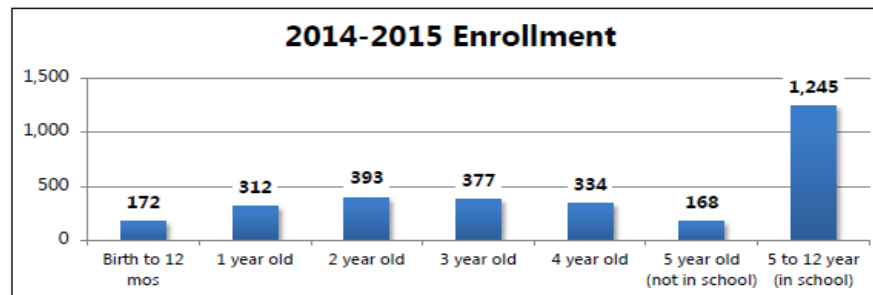
Sample from Data Walk

## School Readiness Program Enrollment



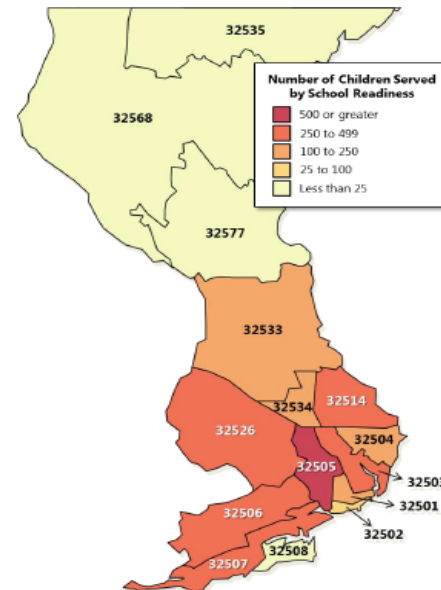
Number as of April 19<sup>th</sup>,  
2017 from ELC

**NOTE:** Will update with  
2016-17 numbers this  
summer – both  
enrollment and wait list.



School Readiness by Zip Code (current as of 12/10/15)		
Zip Code	Number of Children Served by School Readiness Program	Number of Children on School Readiness Wait List
32505	570	165
32506	351	138
32514	338	98
32507	314	74
32503	313	101
32526	312	107
32504	178	52
32534	168	34
32501	150	45
32533	142	22
32502	50	6
32577	19	3
32535	15	7
32568	2	7
32561	1	0
32508	0	1

Note: numbers reflect all ages 0-12



Source: Early Learning Coalition of Escambia County



# % of 4-year olds enrolled in VPK Program

**63.3%**

**Escambia County  
2015-2016**

**78%**

**Florida**

**Source: Studer Community Institute 2017 Update**

**Note: ELC following up with OEL to determine HOW these % are calculated.**

**Note: Learned that Pensacola Christian Academy has 320 students in their 4-year old Pre-K program.**

## ***% OF CHILDREN AGES 0-5 SCREENED BY APPROPRIATE TOOL***

---

Doesn't exist but are keeping on roadmap to indicate importance. Will note in the Baseline Report the desire of the K Readiness CAN to keep this as a vital metric for further exploration in Escambia County. Will also reference ACE and Resilience screenings as well as Trauma Informed Community here in Baseline Report if not mentioned elsewhere.

# % of Babies with Low Birth Weight

County: Escambia

10.9%

Source: Florida Department of Health, Bureau of Vital Statistics

Measurement period: 2015

Maintained by: Healthy Communities Institute

Last update: November 2016

COMPARED TO



FL Counties



FL Value  
(8.6%)



US Value  
(8.0% in 2014)



Prior Value  
(10.3%)



Trend



HP 2020  
Target  
(7.8%)

Technical note: Rates may not reflect the most recent revisions made by the Florida Department of Health, Bureau of Vital Statistics. Consult the source for the most current rates.

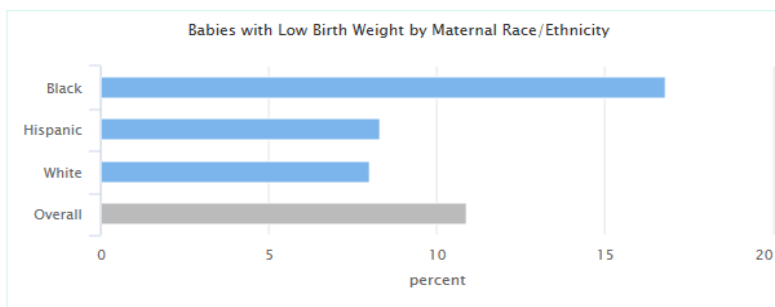
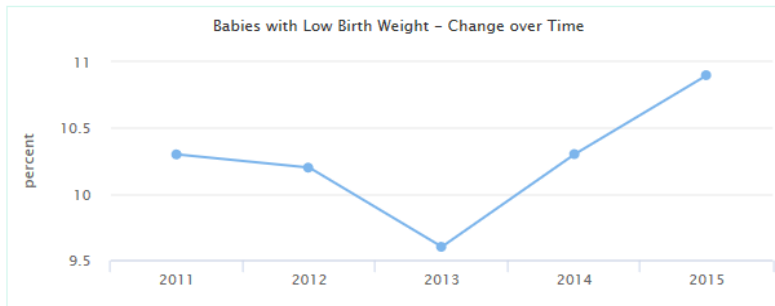
## Graph Selections

### INDICATOR VALUES

☒ Change over Time

### VIEW BY SUBGROUP

☒ Race/Ethnicity



Babies weighing  
under 5.5 lbs at birth

This is 2015 data.

**Florida was 8.6%** for  
same reporting  
year.

Source: LiveWell Partnership  
Dashboard

**NOTE: Can also report by zip  
code heat map – will look into  
for Baseline Report.**

## PRETERM BIRTHS

12.8% (Escambia County)  
10% (Florida)

*Less than 37 weeks*



*Florida Department of Health, Bureau of Vital Statistics  
(2013-2015)*

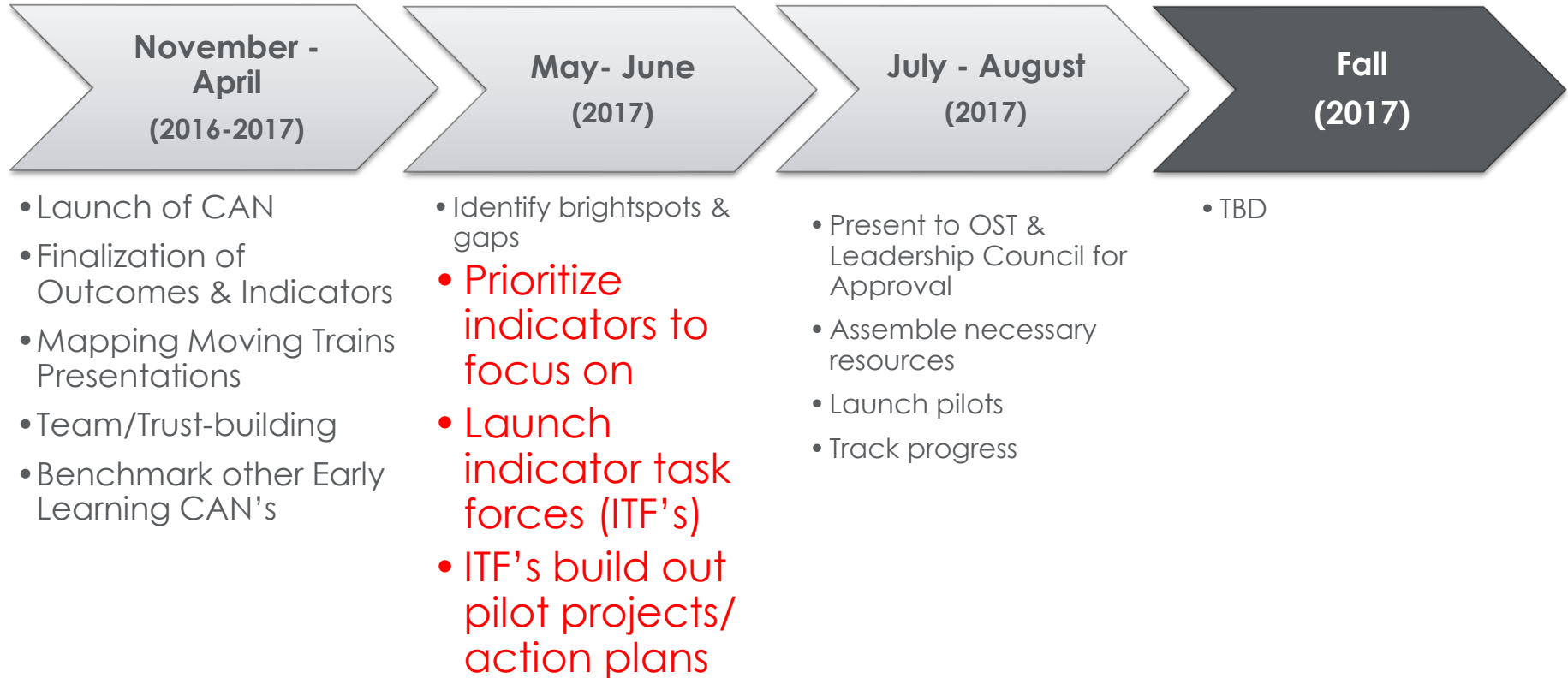
# CONTEXTUAL INDICATORS

## (INCLUDED IN HANDOUTS FOR REFERENCE)

**Before We Vote,  
Let's Look Ahead...**

**Overview of Indicator Task  
Force Work – How are We  
Going to Do This?**

# School Readiness CAN Timeline









# Lessons Learned from Albany Promise

1. Take sailing lessons before you start sailing alone.  
Practice on land before you go to sea.
2. Know that your sailboat will probably spring a leak. Plug it and move on.
3. If someone needs to jump overboard, let them.
4. The seas will always be choppy. You can either cry about it or put on your raincoat.
5. Keep your crew motivated and be friends on land.
6. If there's a rotten board at the center of your hull, don't be afraid to pull back each board until you find it.

- Will be created for the top 2-3 prioritized indicators
- Responsibilities will be to use the data, information presented about existing programming, and expertise to build out action plans for Achieve Escambia work
- All work will include alignment of existing resources and may include extending existing efforts, pulling existing efforts together, creating new efforts, and/or acquiring additional resources.
- **GOAL:** Identify WHAT this CAN **CAN** do that will bring about improvements in the selected contributing indicator that will be achieved faster or at a higher level than if we were not working together.

**TARGET:** Indicator Task Force Action Plans Developed & Presented for feedback to CAN (+OST) **on June 22**; Present to Leadership Council **July 12**

- **Determine Co-Chairs:**
  - Responsible for meeting and work coordination, serving as key liaisons back to CAN, OST, & ultimately Leadership Council
  - Leadership of ITF does not mean will lead all indicator project work
- **Determine How/When to Meet:**
  - ITF's will meet outside of and sometimes during CAN meetings
  - Time will be scheduled to report back to CAN
  - May 23 CAN meeting: 1 hour for ITF's to meet; 30 minutes to report out; 30 mins other work

1. Asset map existing work/efforts
2. Determine Who Else Needs to be Included in ITF
3. Review the data
4. Identify What Additional Information is Needed
5. Determine strategy or strategies
  - Explore brightspots from here and elsewhere
6. Identify existing baseline metric(s) – Set goal(s)
  - Target cohort vs. population-wide goals
7. Build out Action Plan(s) for each Strategy
8. Present the Action Plan to OST & Leadership Council – refine as needed
9. Lead implementation of Action Plan
10. Monitor and refine the Action Plan

- “Blue Sky” Template
  - Adapted from Northfield PROMISE
  - Will be useful early in your work
  - Can then take selected strategies to next step of creating Tactical Action Plan
- Tactical Action Plan Template:
  - Adapted from All Hands Raised partnership
  - Like the Naming of the ITF and creation of Charter
  - KEY NOTE: while accountable parties on their sample were largely partnership staff, we currently do not have that luxury (they have a staff of 16)

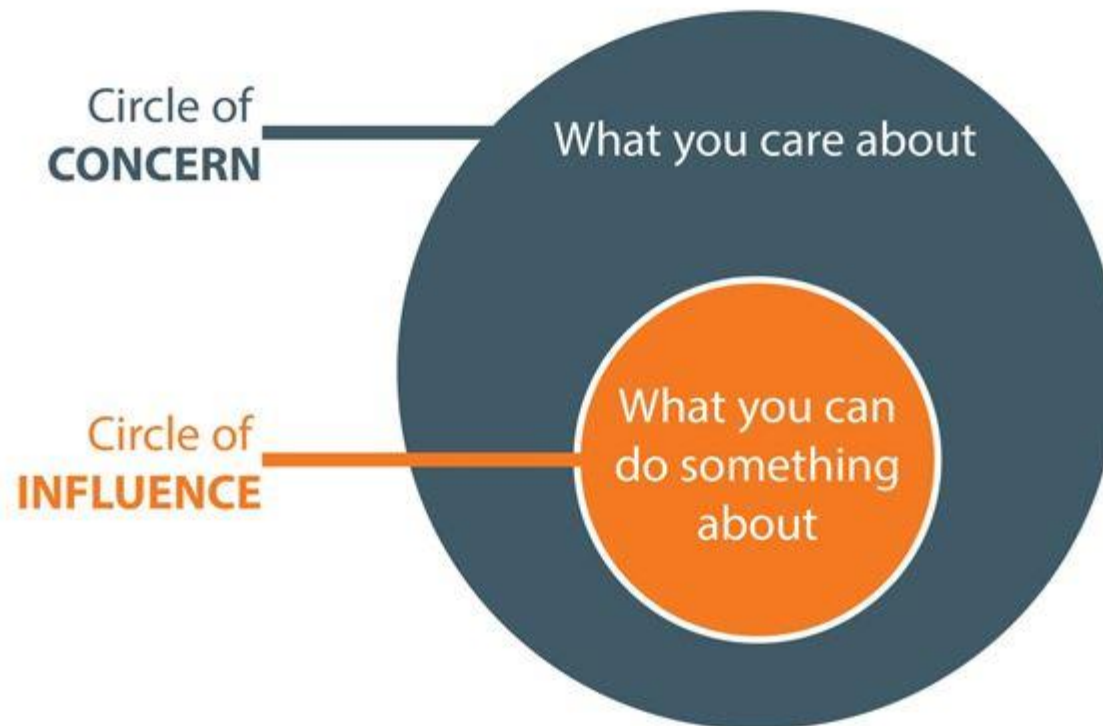
# Are We Ready to Vote?

## Quick Reminder...

# Indicator and Work Selection Tool: Circle of Concern/Influence

Out of Network **influence**: refer to  
*Leadership/ Partnership* to address.

Out of Network **scope**: refer to  
another *Network*.



Each person gets 3 votes.

Can place all on one contributing indicator or divide among multiple.

Have already included votes from CAN members who couldn't be here.



# Voting/Prioritization – Determine How Many ITF's to Create

# Indicator Task Force Creation

# Report Out & Discussion

Close