

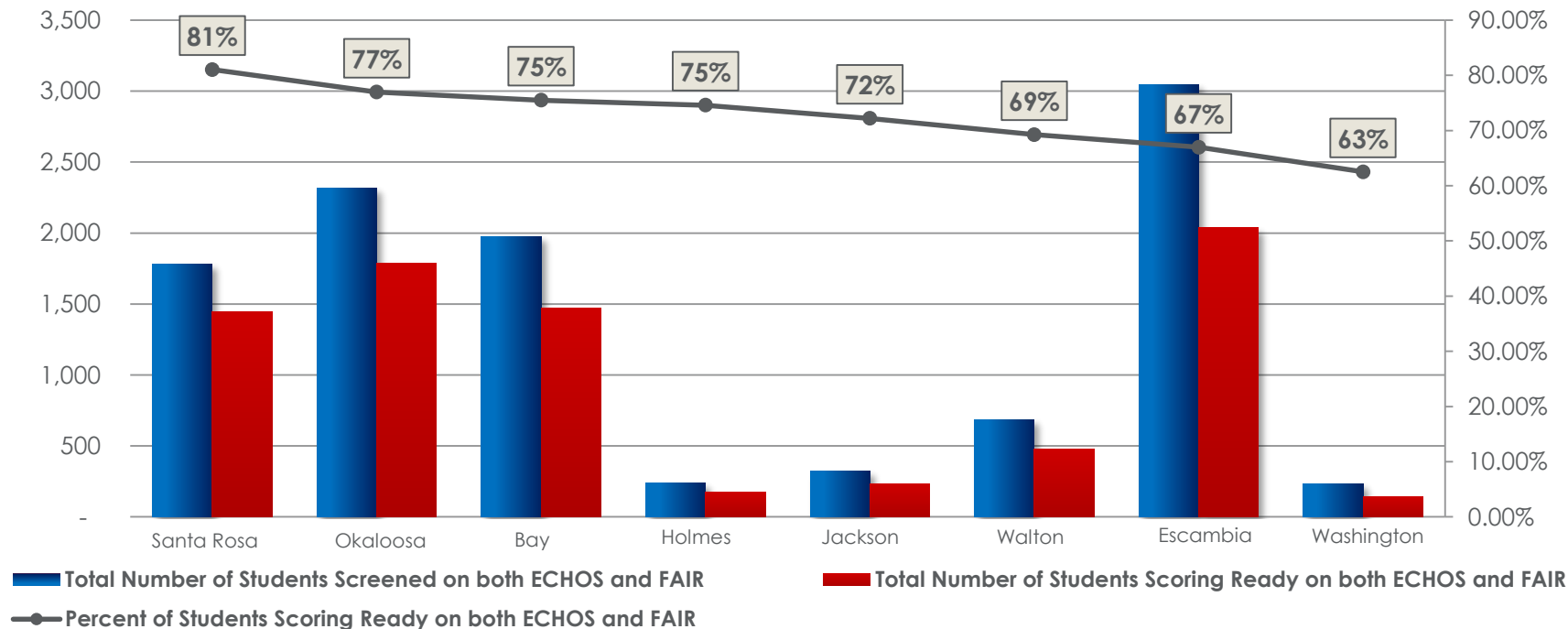
# Kindergarten Readiness CAN Launch Meeting

10 November 2016



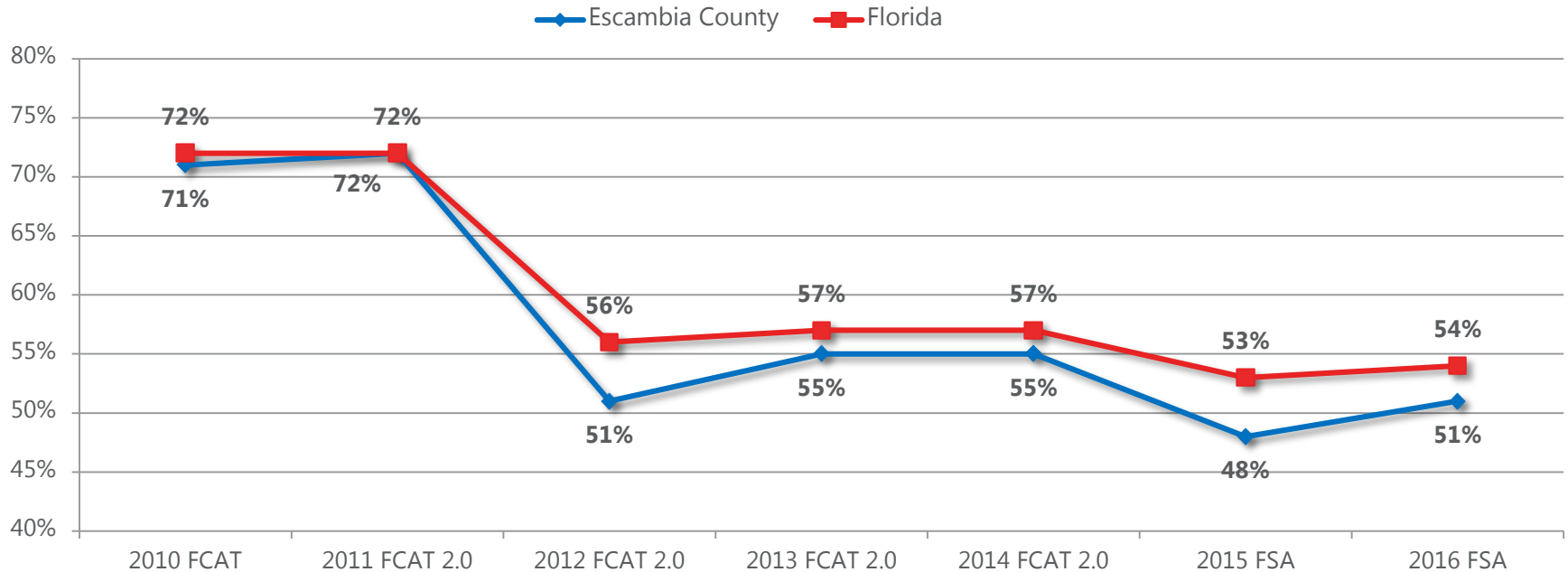
# Kindergarten Readiness

## Kindergarten Readiness Screener (FLKRS) – 2012/2013



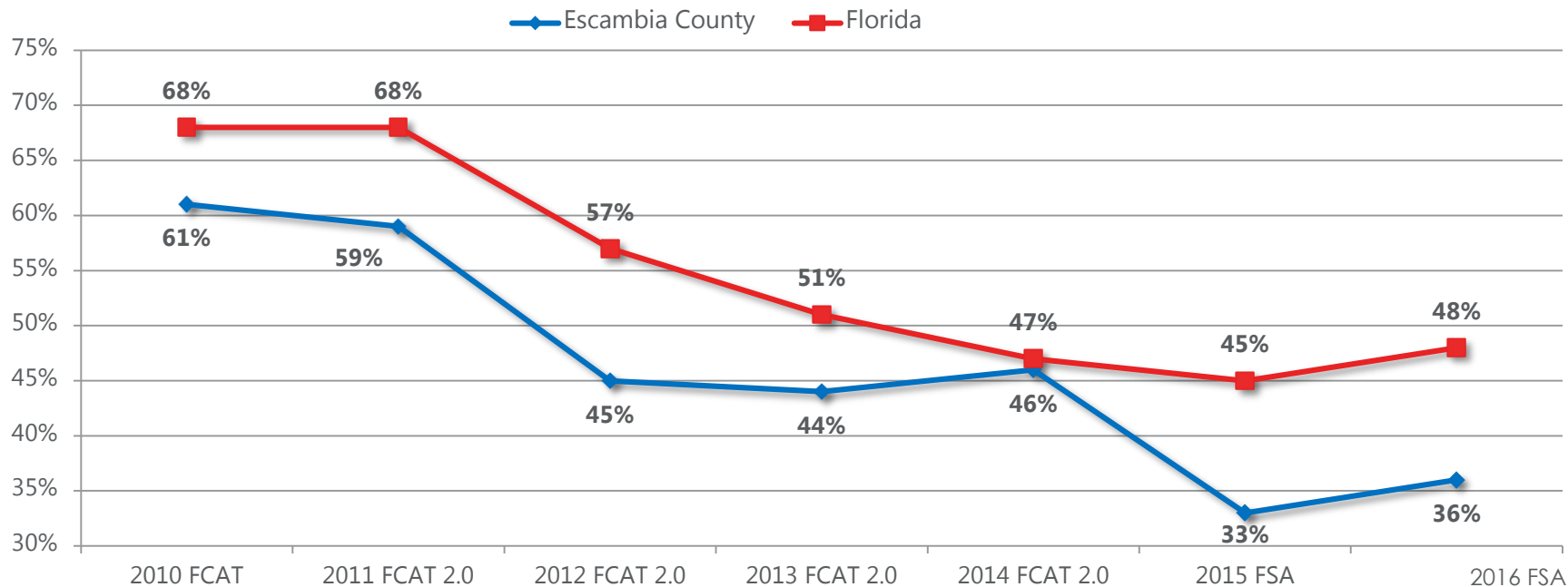
• Source: Florida Department of Education

## Percent of Students Testing Passing



Passing defined as scoring a 3 or above on a scale of 1-5. Proficient/Mastery defined as scoring a 4 or above.  
Source: Florida Department of Education

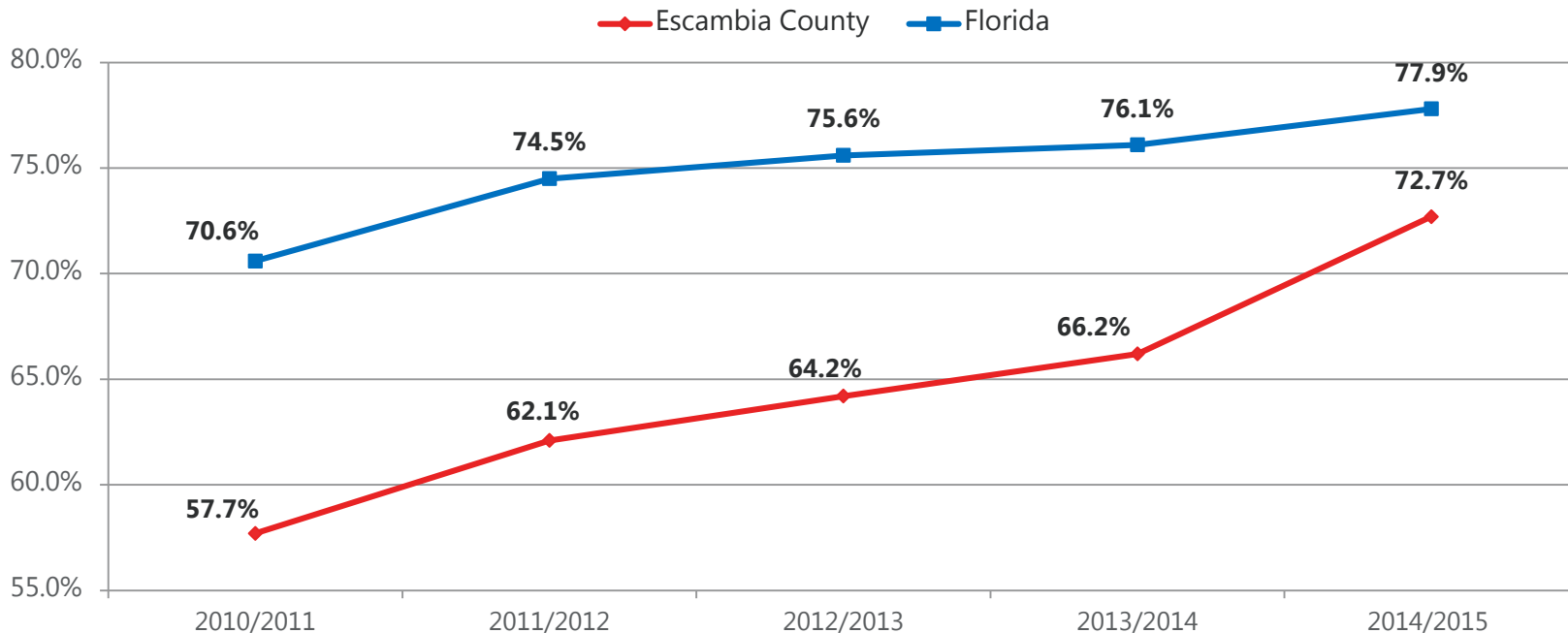
## Percent of Students Testing Passing



Passing defined as scoring a 3 or above on a scale of 1-5. Proficient/Mastery defined as scoring a 4 or above.  
Source: Florida Department of Education

# High School Graduation Rate

## Cohort Graduation Rate



Source: Florida Department of Education & Escambia County School District. Data provided beginning with implementation of the Federal Uniform Graduation Rate.

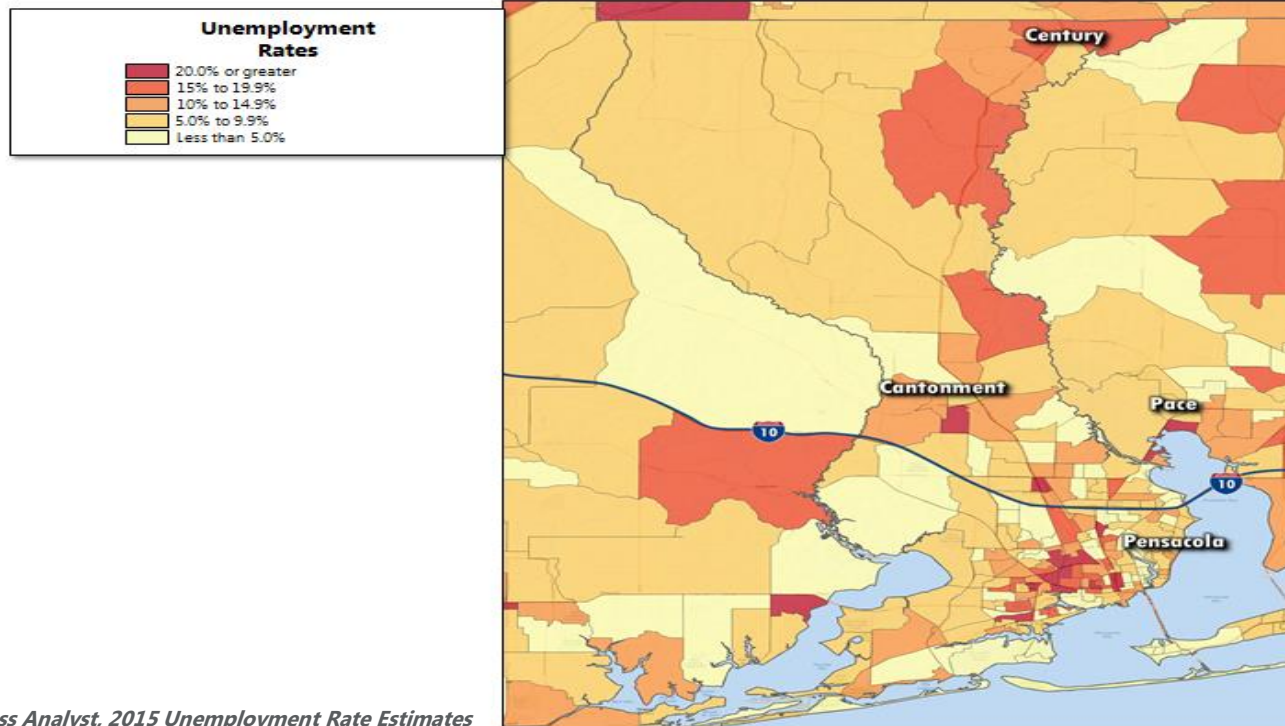
# Post-Secondary Completion

Higher education retention and graduation rates by selected student characteristics: 2013

Institution	Type	Undergrad enrollment (2013)	Retention rate	Overall grad. rate	Male	Female	Asian	Black	Hispanic/Latino	White
Pensacola State College	4-year, Public	10,317		33%	32%	34%	41%	21%	20%	35%
The University of West Florida	4-year, Public	10,072	74%	51%	47%	55%	62%	44%	57%	52%
Fortis Institute-Pensacola	2-year, Private for-profit	712	62%	49%	42%	50%	25%	49%	88%	48%
George Stone Technical Center	2-year, Public	456	85%	64%	58%	91%	75%	72%	100%	60%
Virginia College-Pensacola	2-year, Private for-profit	384	52%	40%		40%		0%		50%
ITT Technical Institute-Pensacola	4-year, Private for-profit	229		NA						

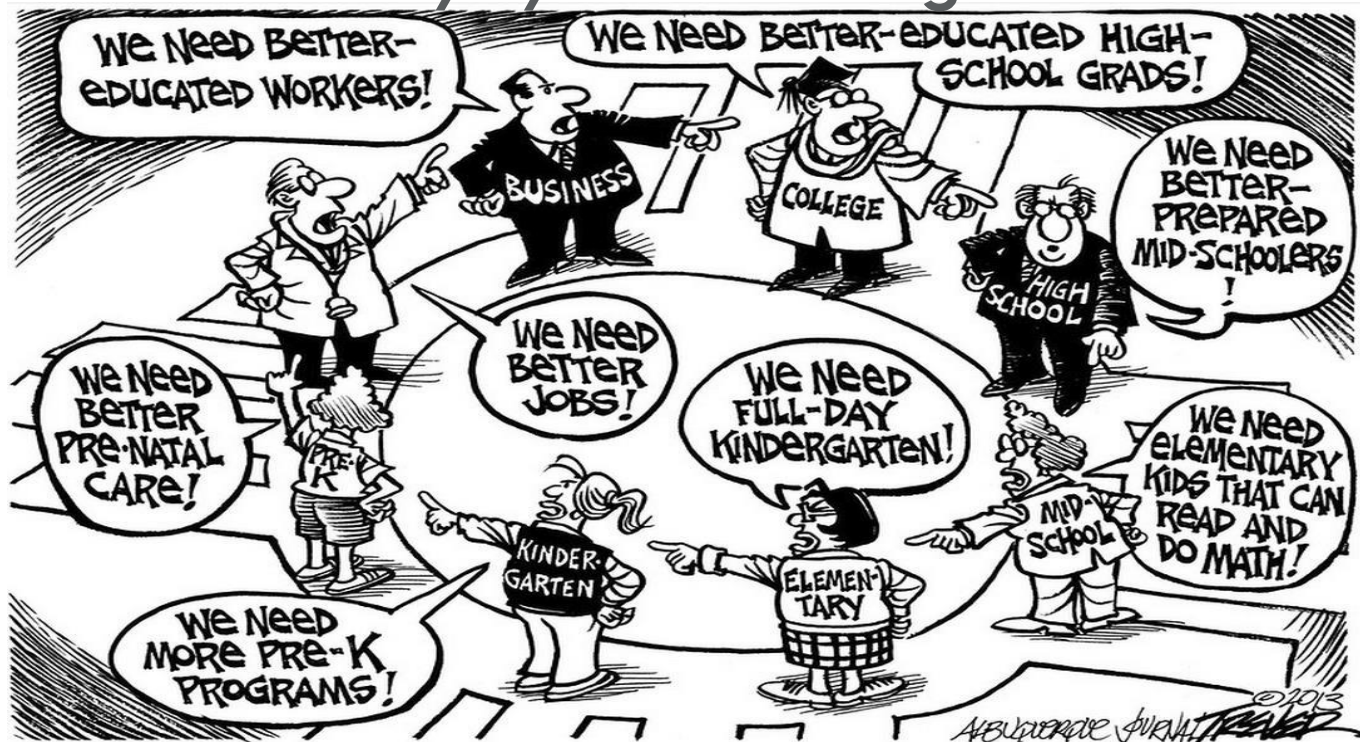
Source: Florida College Access Network

# Unemployment Rate



Source: ESRI Business Analyst, 2015 Unemployment Rate Estimates

## Why Systems Change?





# Program Rich & System Poor





**Need Coordinated Vision & Action**

*“The commitment of a group of actors from different sectors to a common agenda for solving a complex social problem”*

# What is....



# COLLECTIVE IMPACT

## **Vision**

*Every Generation Achieves Success – Cradle to Career*

## **Mission**

*To Align our Community Resources so  
Everyone is Empowered to Achieve Success*

# Collective Impact Partner

**A**chieve  
Escambia  
*Cradle to Career*

65

## COMMUNITY PARTNERSHIPS

building local infrastructure to  
improve education outcomes  
for every child



9,750+  
ORGANIZATIONS  
ENGAGED



32 STATES  
+ DISTRICT OF  
COLUMBIA

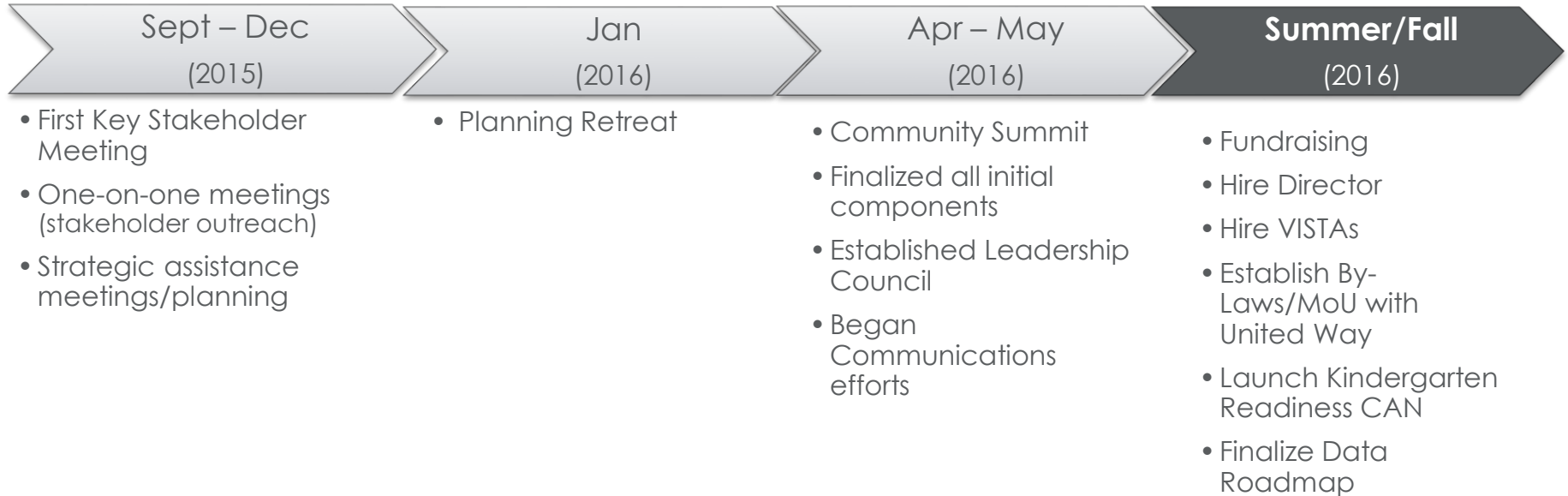
**StriveTogether**

Every child. Cradle to career.

# Collective Impact Work



# How We Got Here

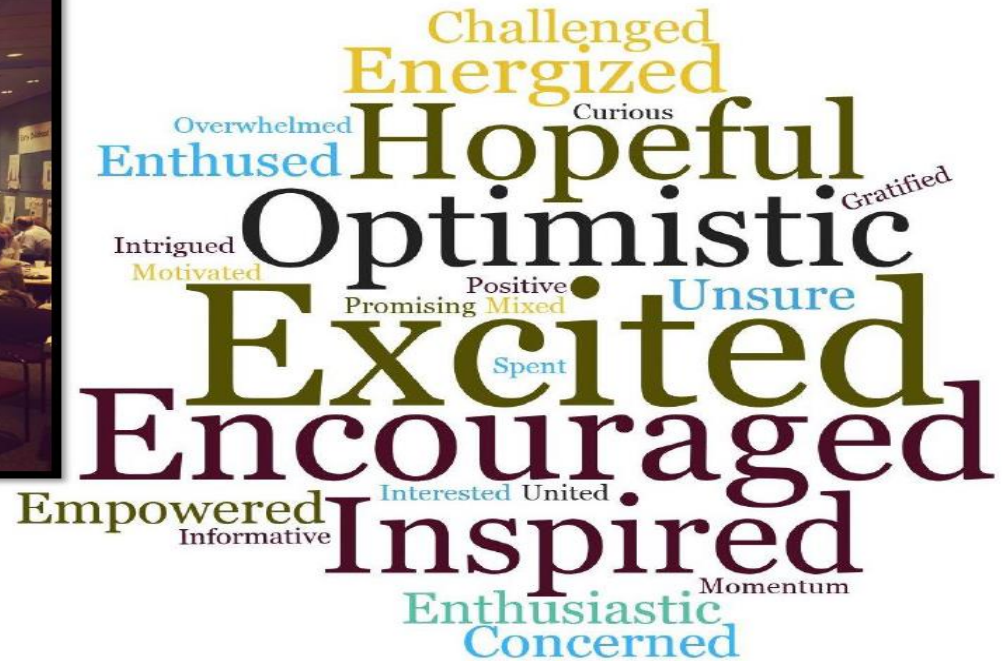




# How we got here...



Planning Retreat  
(6 January 2016)

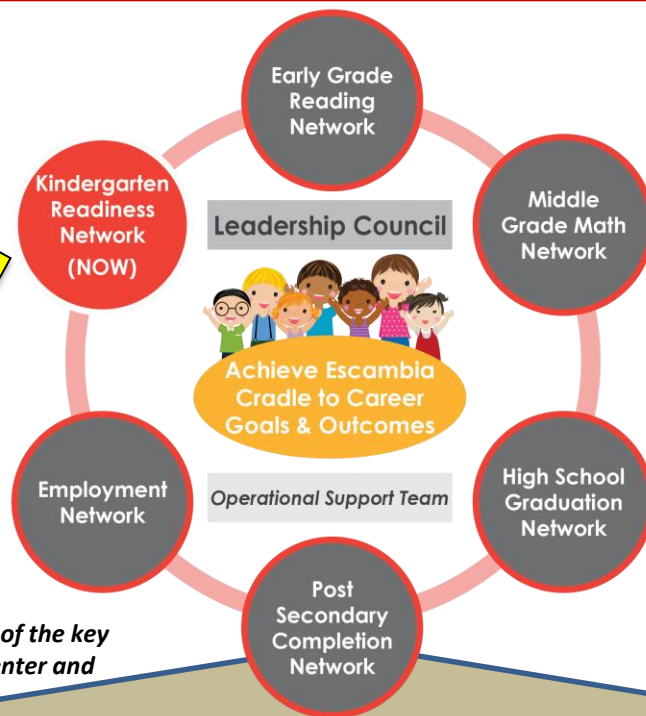
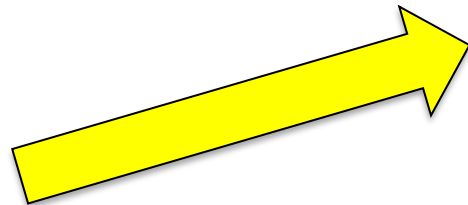


# How we got here...



## Community Summit (11 April 2016)

# Governance Structure



*\*Additional partners may serve one or more of the key backbone convener roles (examples: Haas Center and Studer Community Institute).*

Data Team

Funders Team

Equity Opportunity Team

Communications  
Community Engagement Team

CAN Teams will be intentionally populated with representative parents, faith-based leads and educators.

Backbone Convener – United Way

# Cross-Sector Engagement



# Draft Roadmap



Every  
Child  
**ACHIEVES**  
School  
Readiness



Every  
Child  
**ACHIEVES**  
Academic  
Success



Every  
Student  
**ACHIEVES**  
Graduation



Every  
Learner  
**ACHIEVES**  
Readiness  
for a  
Desired  
Career



Every  
Adult  
**ACHIEVES**  
Economic  
Self  
Sufficiency



# DRAFT Roadmap (continued)



Every child **achieves**  
school readiness

Every student **achieves**  
academic success

Every student **achieves**  
graduation

Every learner **achieves**  
readiness for desired career

Every adult **achieves**  
economic self-sufficiency

## OUTCOMES

- Percent of children Kindergarten ready
- Percent of students proficient in each of the four measures of the VPK assessment

- Percent of students proficient in reading in 3<sup>rd</sup> grade
- Percent of students proficient in math in 8<sup>th</sup> grade

- High school graduation rate

- Percent of students who earn an industry certification or postsecondary degree or join the military by age 24
- Percent of working age population (25+) with same as above

- Median wage
- Unemployment rate /labor force participation rate of working age population

## CONTRIBUTING INDICATORS

- Enrolled in {*high quality*} early education program
- Enrolled in VPK program
- Birth rate by age of mother
- Premature birth rate
- Infants in foster care
- {*High quality parent /caregiver interaction*}

- 1<sup>st</sup> grade retention rate
- Percent of students chronically absent
- Overage middle school students
- Total juvenile arrests
- Percent of students enrolled in Algebra in 8<sup>th</sup> grade
- {*High quality parent /caregiver interaction*}

- Freshmen on track
- Percent of students chronically absent
- Percent of students enrolled in a career academy
- Middle school students who participate in at least one high school credit course
- Total juvenile arrests
- Teen pregnancy/ parenting rate
- {*High quality parent /caregiver interaction*}

- High school graduates who completed at least one accelerated course
- FAFSA completion rates
- Pell grant recipients
- High school graduates who enroll in a postsecondary institution within 16 months after graduation
- Postsecondary student retention after freshman and junior year

- Percent employed in high-skill, high-wage sectors
- Cost of child care
- Percent of population with felony conviction
- Educational attainment of total working population
- Growth of alternative consumer financial products

## CONTEXTUAL INDICATORS

- Single-parent households
- Crime rate
- Poverty rate
- Physical/mental health indicators
- Adult literacy
- Rent-burdened households
- Homeless population
- Working Poor (ALICE rate)
- Children being raised by adult other than their parents

# Communications

**Achieve**  
Escambia  
*Cradle to Career*



**Achieve**Escambia.com  
(launching soon)

# Collective Action Network



DATA



KNOWLEDGE



ACTION



Improved outcomes



# What will we do?

1. Map moving trains
2. Identify partner outcomes
3. Prioritize contributing indicators
4. Identify bright spots/opportunities
5. Align resources & action; SCALE!
6. Continually improve



# Focused on what?

## CONTRIBUTING INDICATORS

- Enrolled in high quality early education program
- Enrolled in VPK program
- Birth rate by age of mother
- Premature birth rate
- Infants in foster care
- *{High quality parent /caregiver interaction}*

## CORE INDICATORS

- Percent of children Kindergarten ready
- Percent of students who meet or exceed expectations in each of the four measures of the VPK assessment

## OUTCOME

Every child **achieves** school readiness



## Long Term Strategy

*“Collective Impact Movement Built to Sustain & Outlast Current Leadership”*

# Discussion / Questions



## Meeting Two

- 14 December 2016 (2 p.m. – 4 p.m.)
  - Collective Action & Collective Impact

## Meeting Three

- 18 January 2017 (2 p.m. – 4 p.m.)
  - Kindergarten Readiness: Core & Contributing Indicators