

# Kindergarten Readiness CAN

Sixth Meeting

Gulf Power Auditorium  
April 20, 2017



# Welcome/ Overview



## **Vision**

*Every Generation Achieves Success – Cradle to Career*

## **Mission**

*To Align our Community Resources so  
Everyone is Empowered to Achieve Success*

# Infant Mental Health Program of Lakeview

Shaun Dahle

# Infant Mental Health of Lakeview Center, IMH



- **Responsibilities/ Goals of Organization:** Lakeview's Infant Mental Health Program is a community-based resource that helps families with children ages 0 to 5 yrs by providing services in both the natural environment and clinical settings. Treatment focuses on enhancing the parent-child bond and is designed to maximize strengths and reduce stressors.
- **Service Area:** Escambia and Santa Rosa Counties
- **Size of Organization** LCI: 2,880 employees (GCE, BH, FFN) ; 2 IMH Specialists
- **FY 2016-17 Budget:** BH Operating revenue budget for FY17 is \$56,133,951; Children's Services operating revenue budget for FY17 \$11,705,947; IMH - Operating revenue budget for FY17 \$104,593
- **Total # served annually:** Children's services serves approximately 6,000 children a year; IMH served 309 in 2016 ;
- **Years in Operation** : LCI since 1954; IMH has been in operation for 17 years
- **Funding Sources:** Funding sources - State, Federal, Local, In-Kind
- **Key Contact:** Shaun Dahle: [sdahle@bhcpns.org](mailto:sdahle@bhcpns.org); 850-469-3862

- **Overall organizational outcomes:** IMH uses the ASQ to screen children who may be at risk for social and emotional difficulties and determine if developmentally they are on track (initially and during treatment, discharge).
  - Note: For children over age 5 we use the CFARS (Children's Functional Assessment Rating Scale) as an outcome measure. DCF and FMHI developed the CFARS to assess 16 domains...IE.. anxiety, traumatic stress, behavior in home setting, family relations, school, and danger to self
  - For children in ECC – reunification ; meeting treatment plan goals; improving behaviors, emotional regulation, and improvements in the functioning of the dyads.
- **Tied to which contributing indicators:** % of eligible children enrolled in an early education program, VPK enrollment , and % of children 0-5 screened by an appropriate tool.
- **Parent education/engagement components - Education:**
  - The impact of trauma and stress on the parent/child relationship.
  - Bonding, attachment and nurturing skills. Strategies to manage and mitigate behaviors problems
  - Basics skills and tools of parenting: how to make a bottle, introducing solid foods, sleep safety, etc
  - The importance of a safe, stable , and secure environment to ensure healthy development.

**Engagement:** Compassion, empathy , provide a safe environment., reflective listening , positive reinforcement , mindfulness / being in the moment during sessions.

- **Greatest Opportunity:** To impact the negative outcomes created by trauma.

**Bright Spot:** a 4 yr old comes to IMH referred by FFN. Client has been placed in Shelter Care due to mother allegedly being involved in SA and DV. Mother presents to IMH as distrustful and on-guard. The parent-child relationship presents as distressed by client becoming attached to current caregivers and is reluctant to engage with mother during IMH sessions. Through the IMH services the client began to trust the mother again and the relationship significantly improved. Mother completed other components of her FFN case plan--job, stable housing, DV counseling and SA treatment. Mother began to feel more confident in her ability to parent as well as provide a safe, secure and stable environment for herself and child. Client was reunified by the court with mother, and after a year mother reports she has a good job, client is doing well in school, mother has been clean and sober for 12 months!

# Escambia Community Clinics

**Sandra Donaldson**

- Escambia Community Clinics, Inc.(ECC) is a not for profit 501(c)(3) community health center providing a full range of healthcare and supportive services to patients.
- **Service Area:** Escambia & Santa Rosa Counties
- **Size of Organization:** 226 Employees, 13 fixed sites & 2 mobile health outreach units; 34,631 patients served in 2016 representing 105,984 patient visits
- ECC began as a community safety-net provider for outpatient care in 1992, and became FQHC in 2007.
- **Funding Sources:** HRSA Bureau of Primary Health Care, Community Benefits partners: Sacred Heart, Baptist Health Care, Escambia County BOCC, Santa Rosa BOCC.
- **Key Contact:** Sandra Donaldson, MPA, MBA: Director of Special Programs ([sdonaldson@ecc-clinic.org](mailto:sdonaldson@ecc-clinic.org))
- **Executive Director:** Chandra Smiley, MSW ([csmiley@ecc-clinic.org](mailto:csmiley@ecc-clinic.org))



- **Outcome:** To create consistent barrier free access to care for the uninsured, underinsured and medically needy of our area.
- **Parent Engagement/Education** ECC has 6 pediatric medical practices, 3 pediatric dental practices, and numerous opportunities for parent engagement! ECC has Licensed Counsel Social Workers embedded in most of the pediatrics sites to offer a warm-hand off of clinical to mental/behavioral health services.
- **Greatest Challenge:** Awareness of services to the most vulnerable in our population to establish a Primary Care Medical Home.
- **Greatest Opportunity:** To relocate main site location and services directly within the community as a direct access, re-branding Escambia Community Clinic as the “Community’s Clinic.”
- **Bright Spot:** Community Centered Health Home (CCHH) Initiative – Cultural Shift in our organization. Advocacy and creation of meaningful partnerships to impact upstream social determinants of health.

- 3 ECC clinics provide pediatric dental services (ECC Dental Clinic, ECC Century and ECC Cantonment).
- **Target population:** Babies, children, and young adults ages 0-20. All children should see a dentist by age 1 to check teeth and gums. Dental issues are key factor in school absences!
- **Partnerships:** Escambia County Health Department offered 3,000 s/f space to ECC at Fairfield Admin site to take over dental services for low income individuals and families.
- 11,831 patient visits during 2016. 5,563 patients and 2,248 of those were new patients who came to clinic in 2016 (never before seen).
- 2.3 FTE Dentists, 3 FTE Dental Hygienist providers.

- **Program Goals:** Provide full range of Women's Healthcare services, including Prenatal, GYN, and preventive women's health services.
- Women of all ages and income levels.
- **Contributing indicators:** 1) Birth rate by age of mother; 2) Premature birth rate.
- Women's Health program consists of Women's Health ARNP, and Certified Nurse Midwife at free standing center (5855 Creek Station Dr. Pensacola, 32504).

# Weis Community School Wellness Cottage



- On site medical clinic inside C.A. Weis Elementary School providing pediatric medical home for children.
- Implemented in early 2016, Planning phase 2015.
- **Key Partners:** Children's Home Society, Escambia Co. School District, UWF, ECC.
- **Target Audience/ Participants:** C.A. Weis students, siblings, children of 32505 in close proximity to school. Medicaid, sliding fee, uninsured, all accepted.
- **Contributing indicators:** % of children ages 0 – 5 screened by appropriate tool; Premature birth rate; Children ages 0 – 5 who have received a verified maltreatment abuse report.
- 715 Pediatric Visits during 2016 at Health Cottage; 465 children now use the Cottage as their pediatric medical home. Chronic absenteeism policy created to offer same day appointments to students absent (2) days or more due to illness.

# Sacred Heart and Studer Family Children's Hospital

## Cat Outzen

- **Responsibilities/ Goals of Organization**

- To advance the health and well-being of children and their families through exceptional and compassionate care where they live, learn and play.

- **Service Area**

- Pascagoula, Miss. to Port St. Joe, Fla.

- **Size of Organization**

- 500+ employees
- 7,000 children inpatient
- 35,000 Peds ER visits
- 24,000 well-child visits in Pediatric Care Center

- **Years in Operation in Escambia County**

- 102 – 48 separate children's hospital

- **Key Contact**

- Cat Outzen
- [Coutzen@shhpens.org](mailto:Coutzen@shhpens.org)
- (850) 416-4713

- **Overall organizational outcomes**
  - Improve health of all children wherever they live, learn, and play
- **Tied to which contributing indicators**
  - Babies with low birth weight
  - Premature birth weight
  - % of children 0-5 screened
  - % of eligible children enrolled in early education program
- **Greatest Challenge**
  - Reduction in reimbursement rates, lack of medical home
- **Greatest Opportunity**
  - Population health and preventive medicine

# Main Services



- Pediatric Emergency Department
- Level III Neonatal Intensive Care Unit (67 beds)
- Pediatric Intensive Care Unit (10 beds)
- Medical/Surgical Beds (21 beds)
- Pediatric Oncology Unit (9)
- Pediatric PT/OT/ST (inpatient and outpatient)
- Pediatric Outpatient Infusion Center
- Neonatal & Pediatric Transport Program
- Early Steps Program
- Autism Center
- Miracle Camp
- Regional Pediatric Dialysis Center
- On-campus Ronald McDonald House



# Pediatric Medical Specialties



- Adolescent Medicine
- Allergy/Immunology
- Anesthesia
- Cardiology
- Cardiac Electrophysiology
- Child Psychiatry
- Craniofacial Surgery
- Critical Care
- Dentistry
- Emergency Medicine
- Endocrinology
- Gastroenterology
- General & Thoracic Surgery
- Hematology/Oncology
- Hospice & Palliative Care
- Hospitalist Medicine
- Neonatology
- Nephrology
- Neurology
- Neuropsychology
- Neurosurgery
- Ophthalmology
- Orthopedics
- Otolaryngology (Ear, Nose & Throat)
- Pediatrics (general)
- Pulmonology
- Radiology
- Rheumatology
- Urology

**More than 120  
board-certified  
physicians across  
29 pediatric  
specialties.**

# Pediatric Specialty Support



- Pediatric radiologists
- Pediatric anesthesiologists
- Pediatric respiratory therapists
- Pediatric physical, speech and occupational therapists
- Pediatric dietitians
- Pediatric pharmacists
- Pediatric residency program
- Pediatric social services
- ABA therapists
- Child Life specialists
- Pet & animal-assisted therapy
- Pediatric certified nurses

# Early Steps



- **Goals of Program**

- to connect families and caregivers with services to enhance their child's development so that children will be ready to succeed when they enter school.

- **Years in Escambia County**

- 20+

- **Target Audience/ Participants**

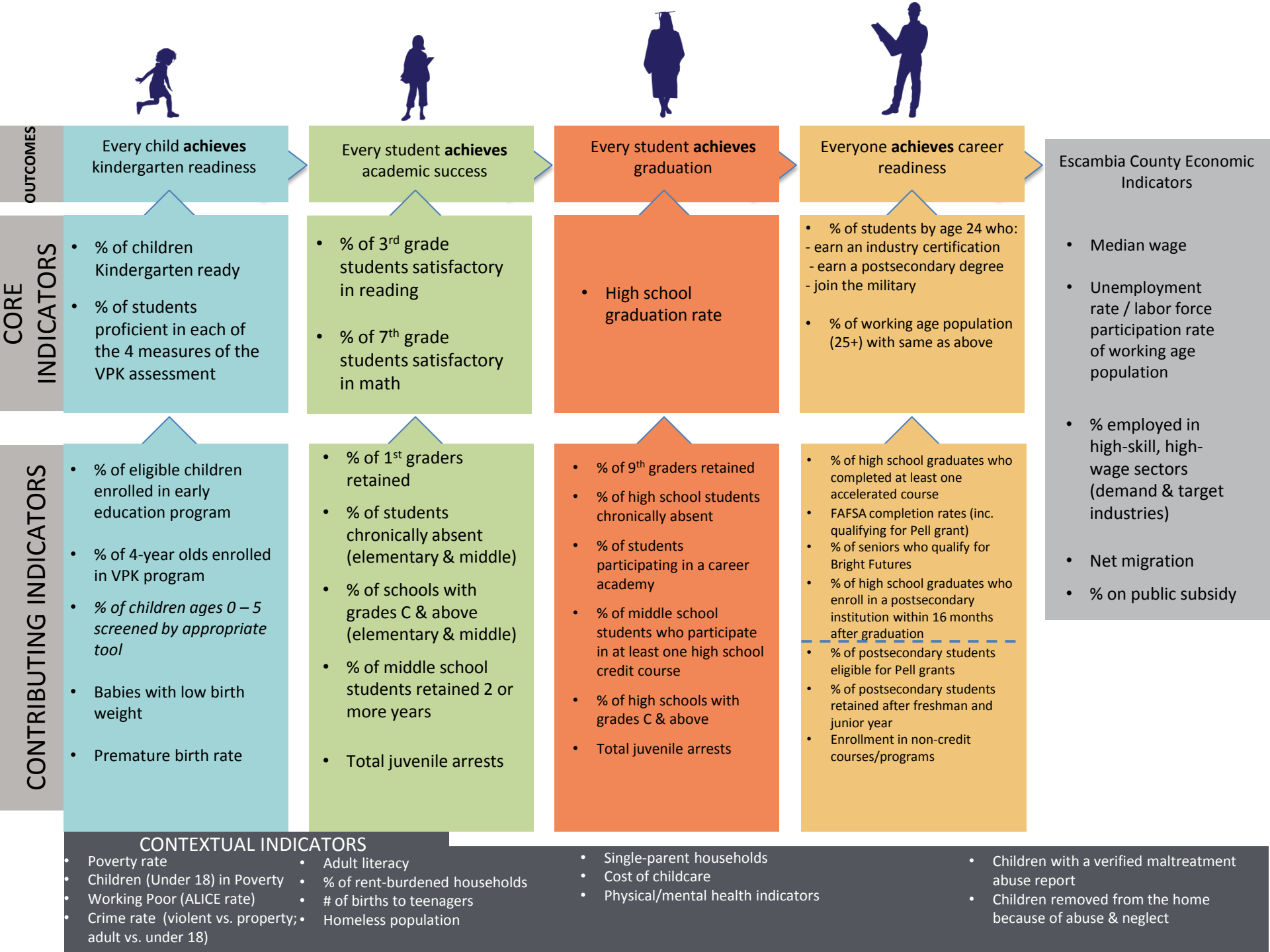
- Children ages 0-3 with developmental delays or who are at-risk for delays
- Residents of Escambia, Santa Rosa, Okaloosa and Walton Counties
- 800 children served per year
- Services provided in-home, at no cost to families
- No income requirements
- If child does not have a diagnosed condition, Must have a significant delay in one area of development or moderate delays in 2 or more areas (language, motor skills, cognitive, social/emotional)

# Early Steps

- **Early Intervention Teams**
  - Service Coordinator
  - Family Resource Specialist
  - Development Specialist,
  - Occupational Therapist
  - Physical Therapist
  - Speech Language Pathologist
- **Key Partners in Program**
  - Department of Health
  - Children's Medical Services
  - Early Learning Coalition

# Presentation of Metrics

Jennifer Grove



# CORE INDICATORS

# Core Indicator 1:

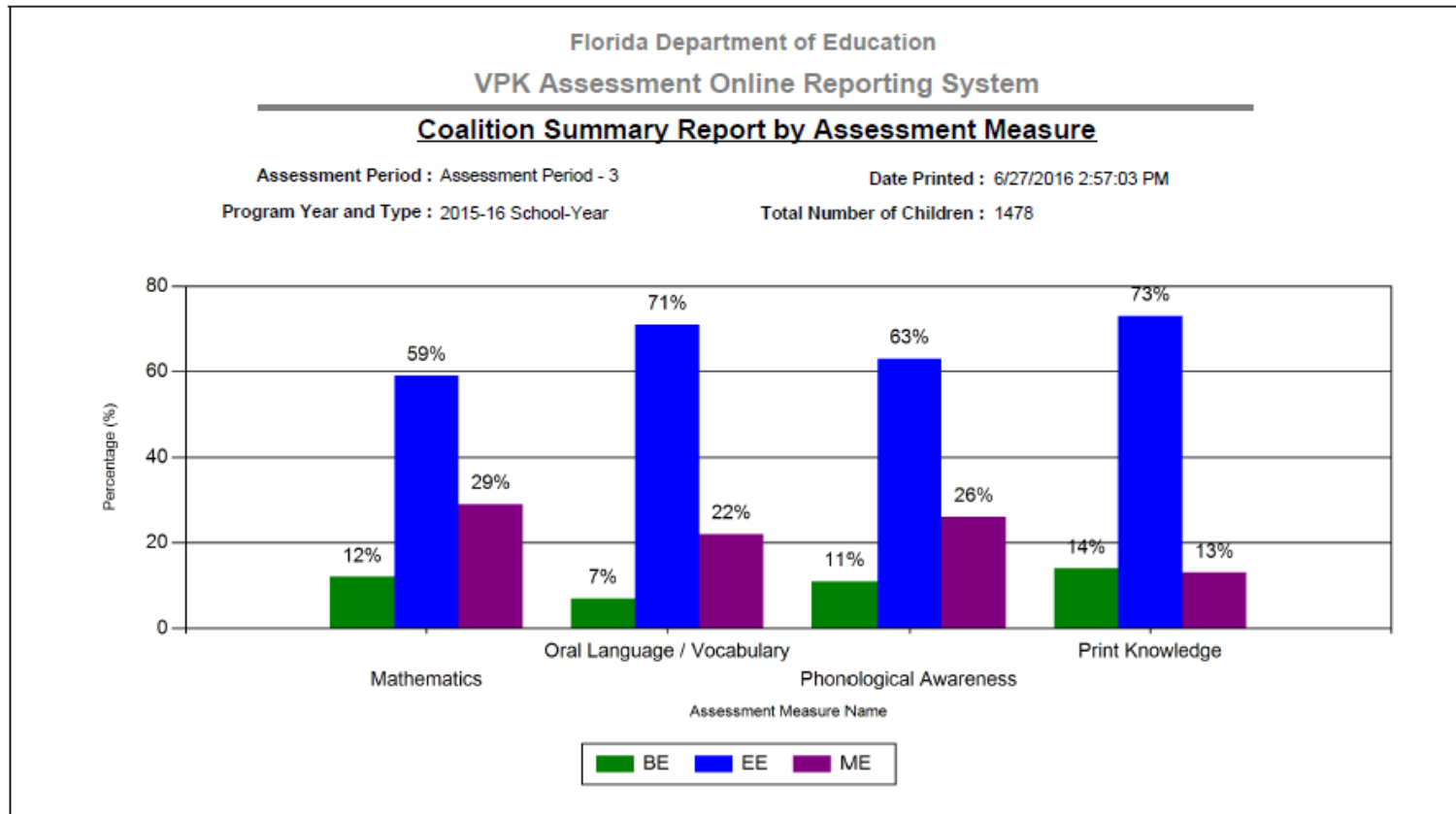
## % of Children Kindergarten Ready

- In Baseline Report will explain how we've not had valid data since 2013-14 when the rate was 66.2% (compared to state average of 71% at that time)
- Will also highlight that a new Kindergarten Readiness Assessment will be implemented Fall of 2017 which will give us more valid data on this metric



# Core Indicator 2:

## % of Students Proficient in each of the 4 Measures of the VPK Assessment



**NOTE:** AP3 results for 2015/16 VPK Assessment. Includes all VPK except ECSD. Will add in for last year's benchmark and report 2016/17 data in Baseline Report as well.

# CONTRIBUTING INDICATORS

# ELIGIBLE CHILDREN ENROLLED IN EARLY EDUCATION PROGRAM



1,164

*Ages 0-3 in School Readiness Programs as of 4-19-17*

*Early Learning Coalition of Escambia County (2017)*

# 4 YEAR OLDS ENROLLED IN VPK



61.3%

2200 enrolled

Total number of 4-year-olds: 3,589

*Includes all VPK in Escambia County*

*Early Learning Coalition of Escambia County (2016-2017)*

## ***% OF CHILDREN AGES 0-5 SCREENED BY APPROPRIATE TOOL***

---

Doesn't exist but are keeping on roadmap to indicate importance. Will note in the Baseline Report the desire of the K Readiness CAN to keep this as a vital metric for further exploration in Escambia County.

## BABIES WITH LOW BIRTH WEIGHT

10.3% (Escambia County)  
8.6% (Florida)

*Weight under 2500 grams*



*Florida Department of Health, Bureau of Vital Statistics  
(2013-2015)*

## PREMATURE BIRTHS

12.8% (Escambia County)  
10% (Florida)

*Less than 37 weeks*



*Florida Department of Health, Bureau of Vital Statistics  
(2013-2015)*

# CONTEXTUAL INDICATORS



## POVERTY RATE

15.4% (Escambia County)  
15.8% (Florida)

*Total population living under  
federal poverty guidelines  
(\$11,770 for single adult and  
\$24, 250 family of four)*



*SAIPE (2015)*

## CHILDREN (<18) IN POVERTY



27.4% (Escambia County)  
23.4% (Florida)

*Total population of children under 18 in  
poverty divided by total population of  
children under 18*

*SAIPE (2015)*

## ALICE RATE



*Households that  
earn more than  
the federal  
poverty level but  
less than the basic  
cost of living for  
the county*

27% (Escambia County)  
29.5% (Florida)

*United Way of Florida (2015)*



## CRIME RATE



- Total Crimes (Per 100,000 population)  
4,734.7 (Escambia County)  
3,342.7 (Florida)
- Violent Crime Rate (Per 100,000 population)  
703.7 (Escambia County)  
471.4 (Florida)
- Crimes Against Property  
3,262 (Escambia County)  
90,903 (Florida)



*Office of Economic & Demographic Research (2015)*

# ADULT LITERACY

Need help getting this metric

# RENT-BURDENED HOUSEHOLDS



52.2% (Escambia County)  
58.3 % (Florida)

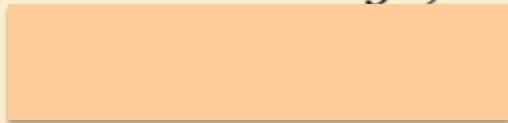
*30% or more of household income is used to pay rent*

*ACS (2015)*

## BIRTHS TO TEENAGERS

23.7 (Escambia County)  
16.1 (Florida)

*Births to mothers  
ages 13-19 (Per  
1000 population);  
Number of births by  
mother's age,*





# HOMELESS POPULATION

4.4% (Escambia County)  
2.5% (Florida)

*An individual or  
family who lacks a  
fixed, regular, or  
adequate nighttime  
residence*



*Florida Council of Homelessness (2016)*



# SINGLE-PARENT HOUSEHOLDS



*Total households of own children of single-parent (father) and single-parent (mother), divided by total households of own children*

38% (Escambia County)  
36.7% (Florida)

*ACS 2015*

# **COST OF CHILDCARE**

*Ages 0-3*



49%  
of a parent's  
monthly income  
(Escambia County)



56%  
of a parent's  
monthly income  
(Florida)



*Office of Early Learning (2015)*

# PHYSICAL/ MENTAL HEALTH INDICATORS

Working with LiveWell Partnership to pick most appropriate measures.

# CHILDREN WITH VERIFIED MALTREATMENT ABUSE REPORT

Families First Network is providing.

# CHILDREN REMOVED FROM THE HOME BECAUSE OF ABUSE & NEGLECT

Families First Network is providing.

# Overview of Other Strive Together Community K Readiness Work

- Kindergarten enrollment forms created to capture any pre-K activity
- “Ready Freddy” program to promote early literacy ([www.readyfreddy.org](http://www.readyfreddy.org))
- CAN sub-groups created:
  - Parent support
  - Transitions from pre-K to K
  - Development of early child care providers

# Spartanburg Academic Movement



- Improving Parents' Knowledge:
  - Ready Rosie
  - Early learning kits for parents
  - Early Care & Education Training event sharing
- Improve PreK Absenteeism:
  - STRIVE FOR FIVE
  - Incentives for students





# The Toolkit for Kindergarten Readiness

This *Toolkit* is an educational and monitoring resource. It is a publication which is being utilized in many local child care centers and is available to families. The *Toolkit* monitors the journey from birth to kindergarten so it has a potential lifespan of 5 years. A sample of the Toolkit is provided [here](#).

To obtain a copy for your child, please fill out the form below and one will be mailed to you. If you wish to print and mail your request, you may download the form [here](#).

---

I am the parent or guardian of a child between 2 and 48 months of age: \*

- ☐ Yes  
☐ No

## CHILD'S INFORMATION

---

Child's Name

First Name

Last Name

This child lives in Spartanburg County, SC:

- ☐ Yes  
☐ No

Select the child's school district: \*

## RESOURCE ROOM

ADVOCATES

ASQ-3 SCREEN

KINDERGARTEN  
READINESS TOOLKIT

PARENTS: BIRTH TO  
KINDERGARTEN

PARENTS: K TO 3RD  
GRADE

PARENTS: 4TH TO 8TH  
GRADE

PARENTS: 9TH TO  
12TH GRADE

PARENTS: POST-  
SECONDARY  
ATTAINMENT

**EARLY CARE &  
EDUCATION TRAINING**

### Early Care and Education Training Email Notification Form

\* Required

First Name \*

Your answer

- Educating the Public



GENERATION NEXT  
CLOSING THE EDUCATION ACHIEVEMENT GAP

Our Work

About Us »

Get Involved »

Data »

Co

**GOAL 1** Kindergarten Readiness

**SHE'S READY TO SUCCEED  
IN SCHOOL AND LIFE  
— FROM DAY 1**

- **Pathways to Quality** Project (goal is to increase # of high-quality programs):
  - Used Minnesota's Parent Aware Quality Rating & Improvement System
  - Mapped all types: focused on the biggest gap in quality which was in licensed family childcare
  - Set specific goals (By 2018, 35% of LFCC will be rated high quality.)
  - Funded by Bush Foundation



- **Reminders for Readiness:**
  - Text messaging program that provides parents real-time, developmentally-appropriate information to promote their child's success
  - GOALS:
    - By Spring of 2018, 5-10 organizations engaged in outreach
    - 1,000 parents using the service by end of Year 2
    - Add additional languages
  - Has start-up funding from Target

- **Screening at 3:**
  - Program focused on working across partners to conduct screening at every well-child medical visit for 3 year olds:
    - Train partners
    - Engage parents
    - Expand effective approaches
    - Increase comprehensive screenings by medical providers (track referrals)
  - GOAL: By Fall 2017, increase from 32% to 50% (1,731 additional children)



**Pre-K Today.  
Professionals  
Tomorrow.**

Register for Pre-K | **April 4 – 8**  
At Your Local Elementary School

Find more information at  
**[DallasISD.org/PreK](http://DallasISD.org/PreK)**

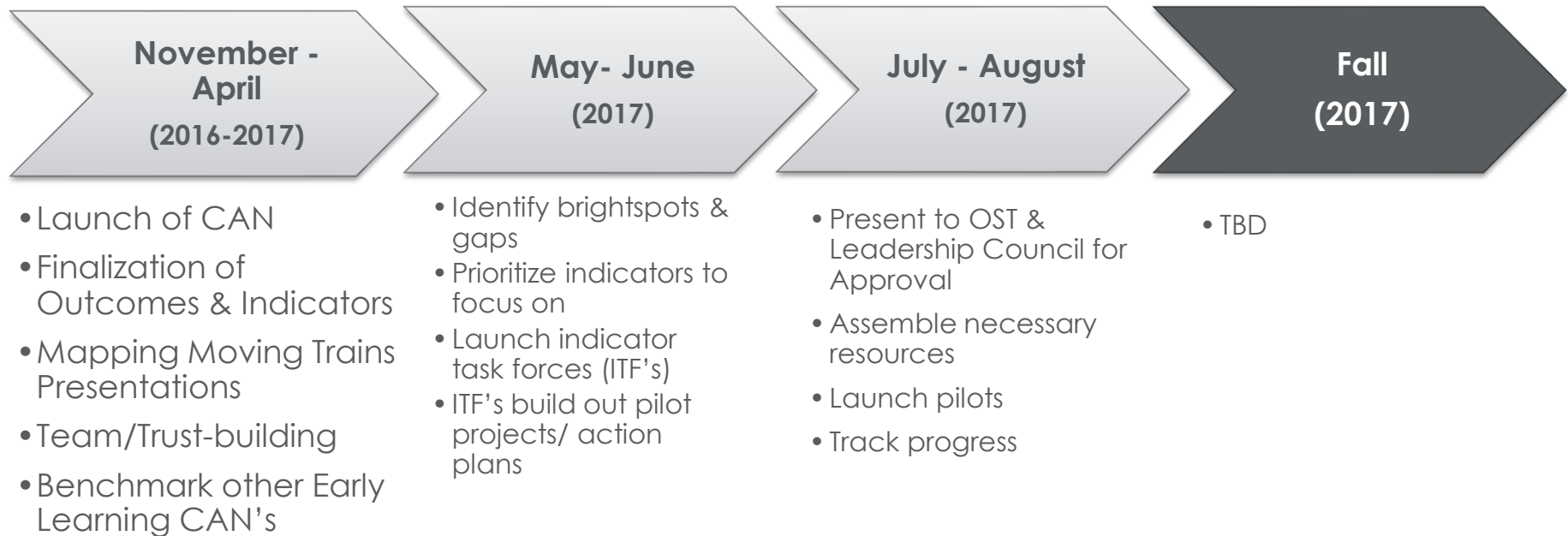
Dallas  
Independent  
School  
District 



- Pre-K Registration Campaign
  - Coordination of 9 school districts
  - “Pre-K Registration Week”
    - Events, social media campaign, flyers, billboards, etc.
    - 100+ site partners: churches, businesses, clinics, non-profits, food pantries, etc.
  - 2015 Annual Goal: 14,500 early Pre-K registrants

# Review of Timeline & Next Steps

# School Readiness CAN Timeline

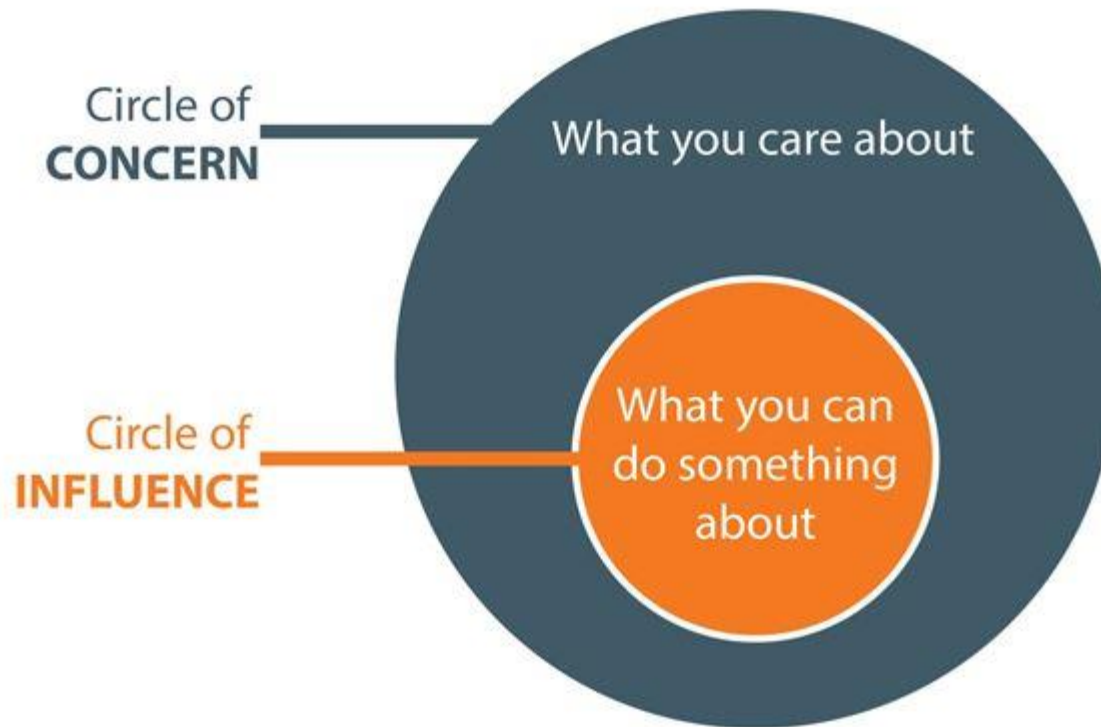


# Project Selection

## Tool: Circle of Concern/Influence

Out of Network **influence**: refer to *Leadership/ Partnership* to address.

Out of Network **scope**: refer to another *Network*.



# Example from another community

## *What outcome are we improving?*

54% Percent of students proficient in 3rd Grade Reading

% of children attending effective afterschool program: 17%

Percent of children with regular school attendance: 80%

Free/Reduced Lunch: 85%

Mobility rate: 73 %

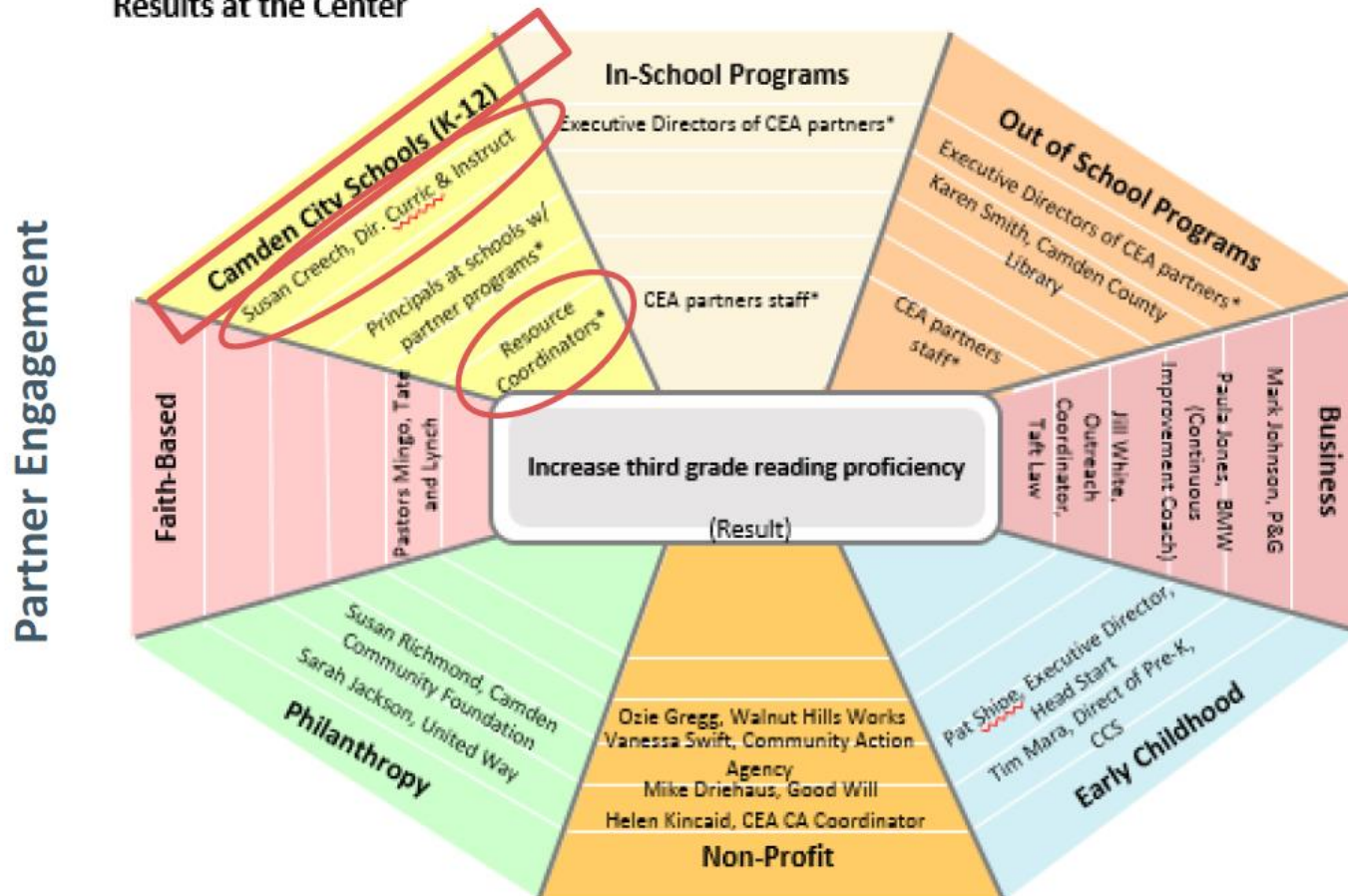
***What this Network can change.***

***What this Network cannot change.***

# Mapping Moving Trains by Outcome/Indicator

## Camden Education Association: Case Study Example

Results at the Center



\* A list of names can be found in Network Charter

© Jolie Bain Pillsbury

RBL

Please fill out form with selection of contributing indicators your organization/programs align with so we can develop our own inventory

# Discussion